



CONTENTS

1. *BATHROOM TECHNICAL*
2. *BATHROOM AESTHETIC*
3. *ADDITIONAL PRODUCTS*
4. *THIS IS US*



FOUR
NO'S
MAKE A
YES!



**WHAT EVERY
BATHROOM
NEEDS,
BUT NEVER
REALLY HAS!**

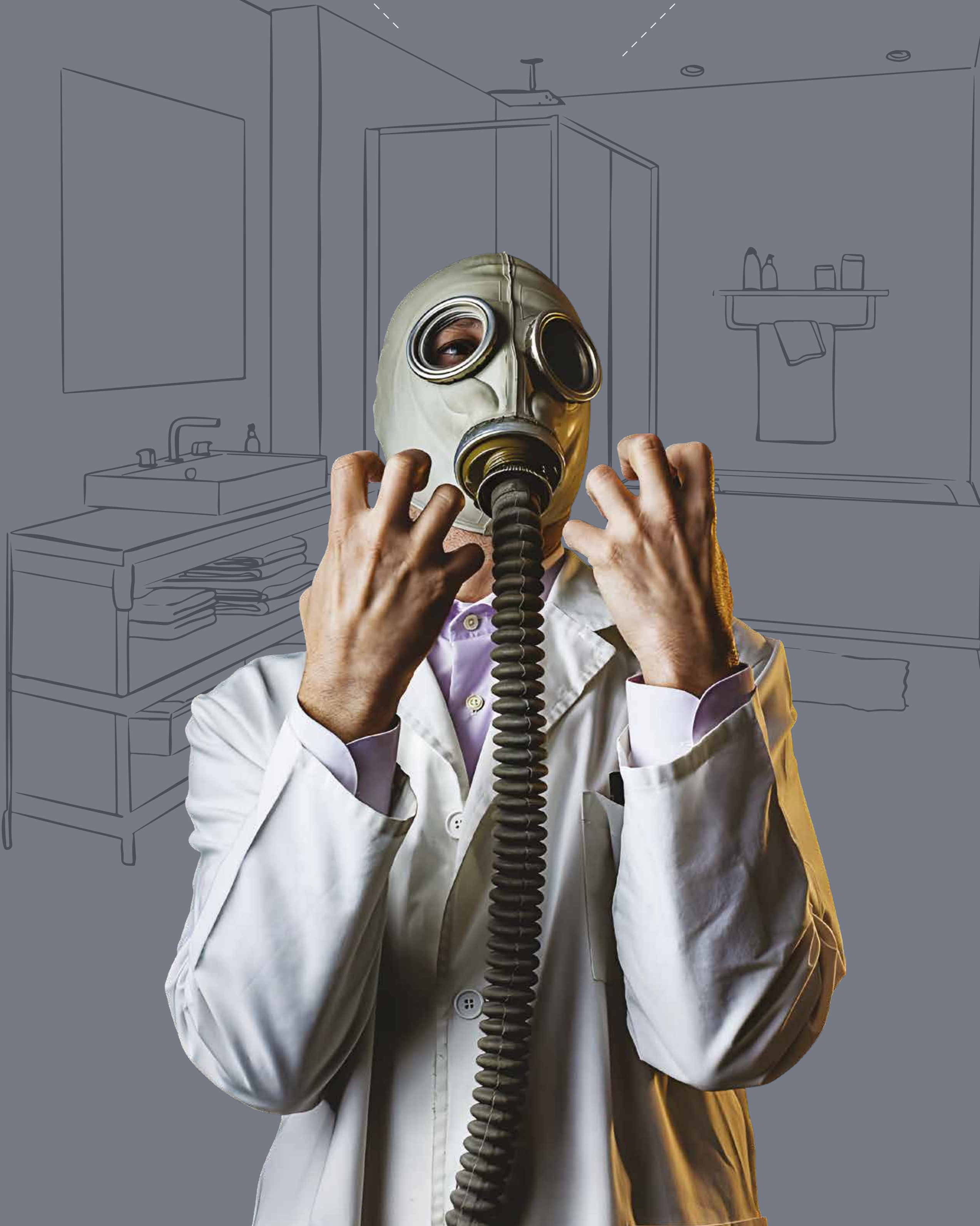
BATHROOM TECHNICAL

'NO' #1

*Moisture and perspiration
in wet areas.*

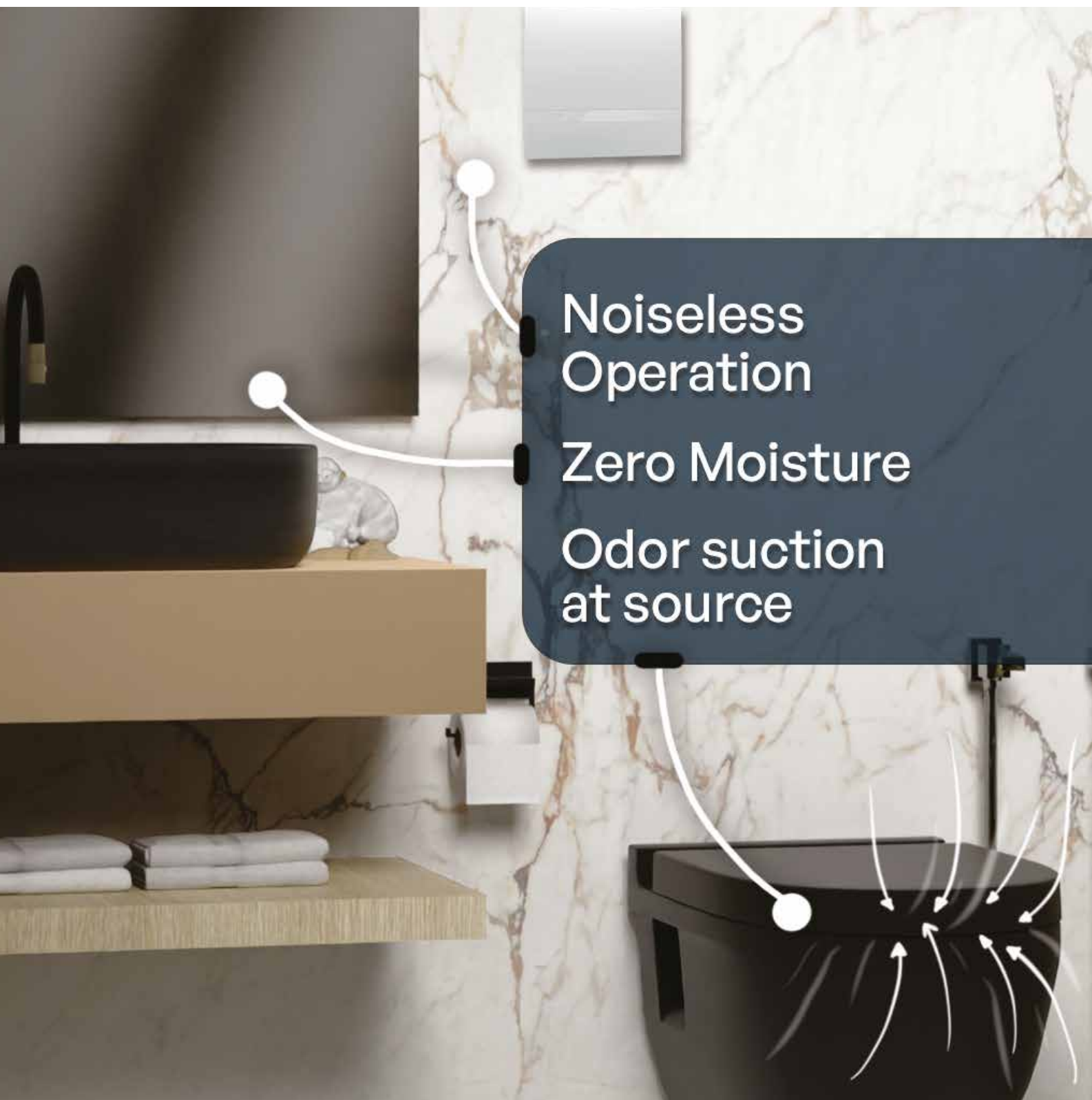
*Foul smells generated
during usage.*

*Smells traveling back
from drainage.*





NO SMELL



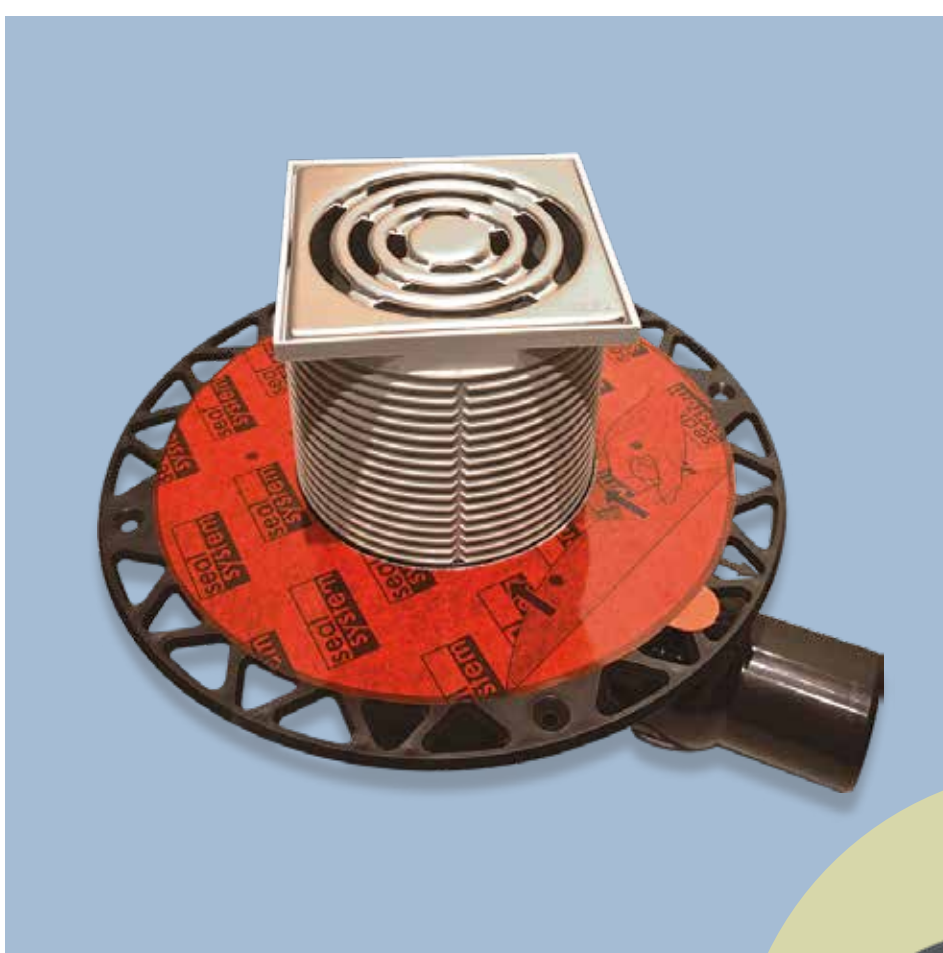
Noiseless Operation
Zero Moisture
Odor suction at source



AIR FLUSHING SYSTEM

The three-point suction system eliminates WC odors at source, controls humidity and prevents mold - ensuring bathroom freshness at all times.

[*Lunos AFS Brochure*](#)



TECE
close to you

DRAIN POINT SYSTEM

Non-return odor trap addressing reverse odor.

Odor trap

[*TECE DPS Brochure*](#)

'NO' #2

Improper installation practices causing unreliable plumbing.

Weak or poorly sealed joints leading to leakage.

Impurities in water damages pipes and fittings.





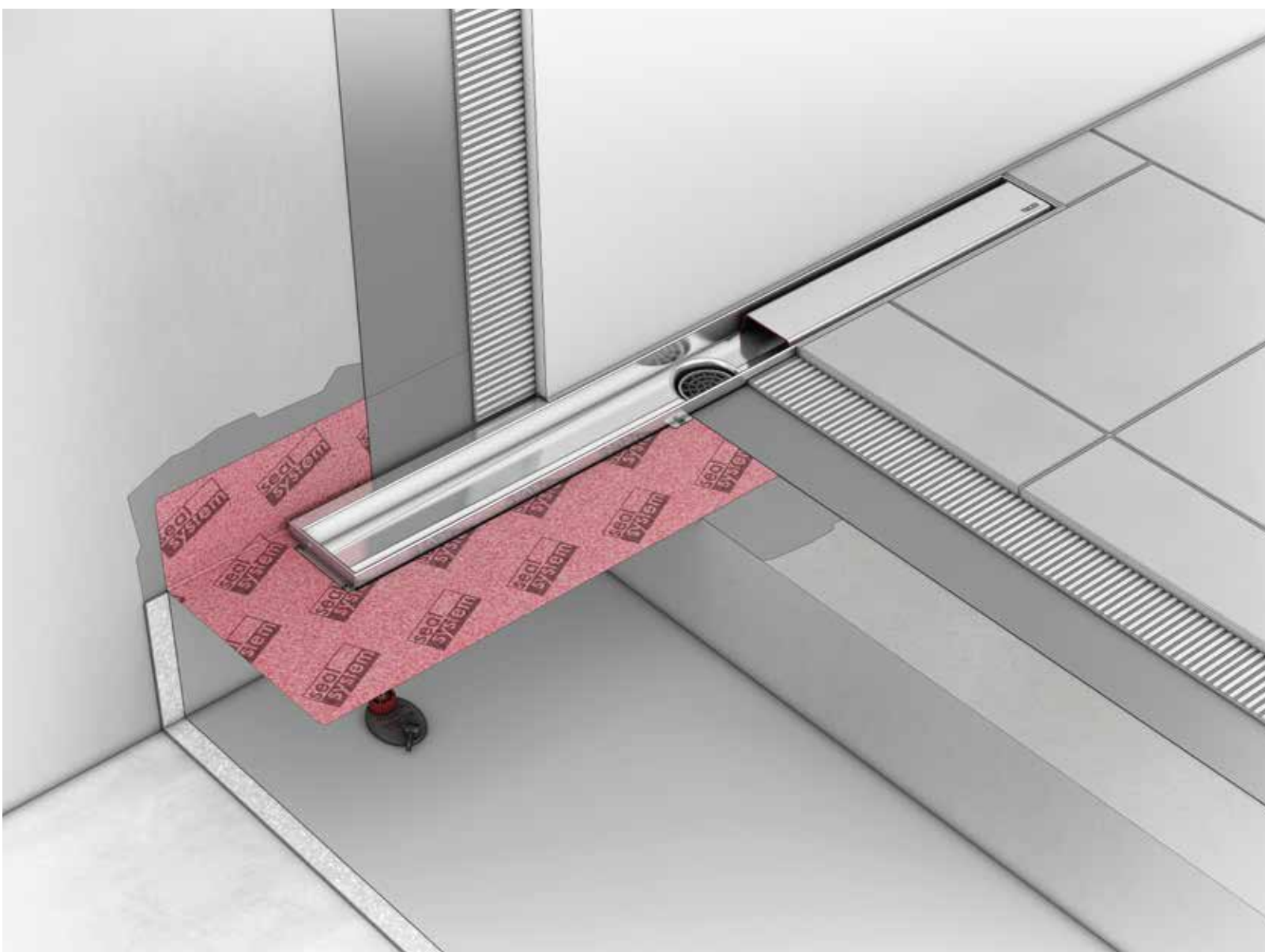
PEX PIPES

Jointless and leakproof piping system specialists.

[Giacomini Pipe-in-Pipe system Brochure](#)

[TECE push-fit system Brochure](#)

[Racmet stainless steel piping Brochure](#)



TECE

close to you

SEAL SYSTEM

TECE Drainage Solutions with watertight TECE Seal System that prevents seepage.



[more about TECE Seal System](#)



STRAINER

Blocks impurities before they enter pipes.

[Giacomini Strainer Brochure](#)

NO LEAKS

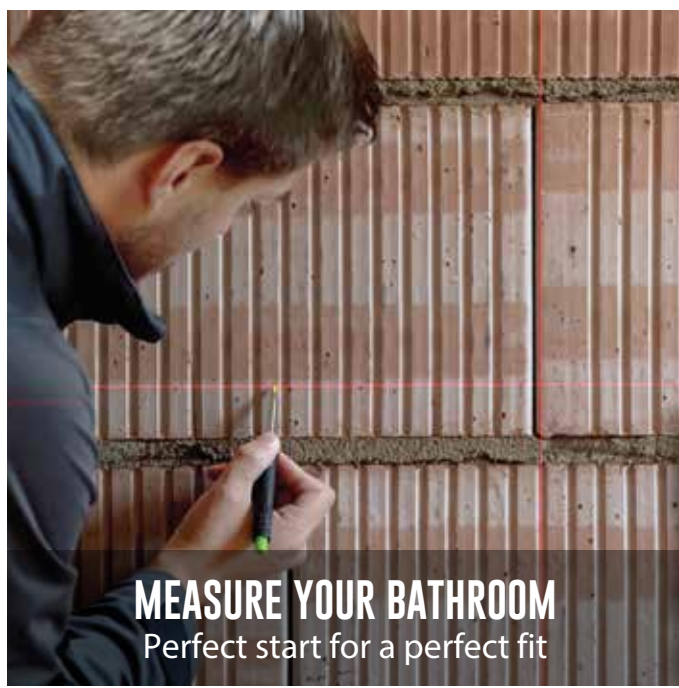
'NO' #3

Invasive repairs requiring major deconstruction.

Long installation timelines delaying project completion.

Incorrectly adapted installation practices causing damages and delay.





MEASURE YOUR BATHROOM
Perfect start for a perfect fit



PLAN YOUR WALL WITH EXPERTS
Tailored to your needs



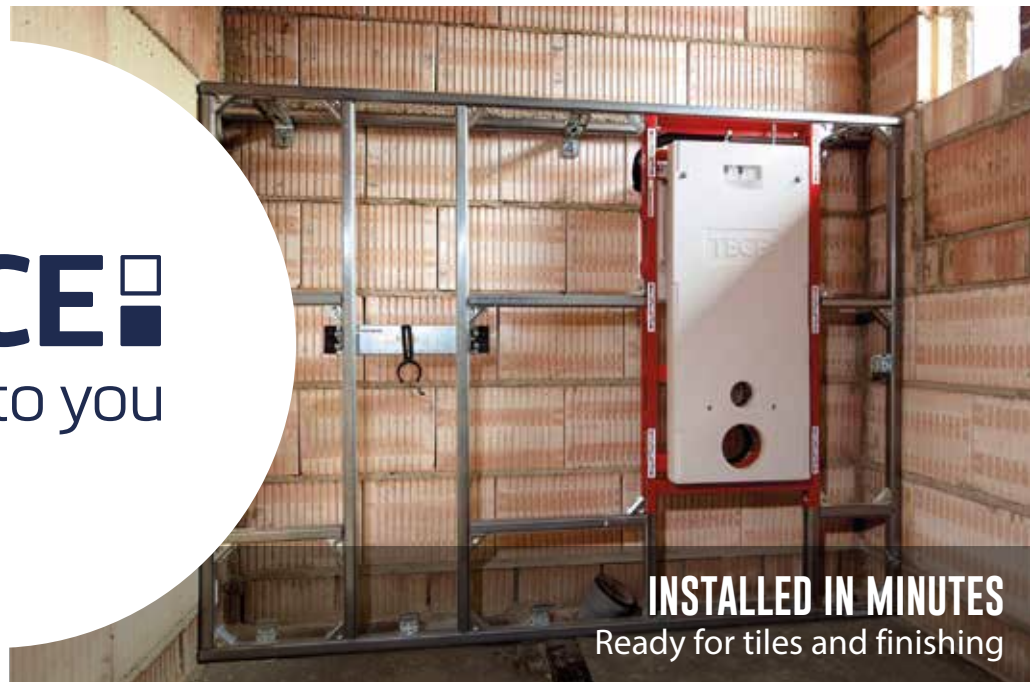
PRECISION CRAFTED IN THE WORKSHOP
Built for excellence



DELIVERED TO YOUR DOORSTEP
Hassle-free and ready to go



TECE
close to you



INSTALLED IN MINUTES
Ready for tiles and finishing

PROFIL MODULAR DRYWALL

Pre-fabricated designs done off-site, for simple and fast assembly on-site. In addition to saving installation time, Drywalls extend the lifespan and reusability of premium bathroom fixtures as it can simply be unmounted for easy renovation, relocation or future redesigns.

[TECE Drywall Brochure](#)



PIPE-IN-PIPE SYSTEM

For quick on-site installation.

[Giacomini Pipe-in-Pipe system Brochure](#)



TECE
close to you



FITTINGS AND ACCESSORIES

Fool-proof systems, quick to install and easy to maintain.

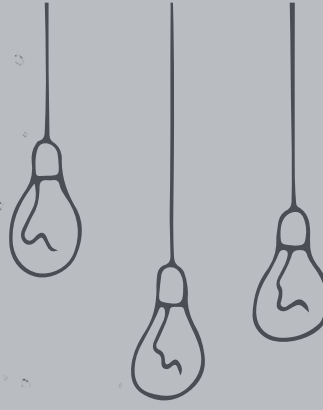
NO
WAT
ER

'NO' #4

Water scarcity leading to metering and restrictions.

High water consumption in showers and cisterns.

Poor water-saving products that reduce user experience.





SHOWERS

Water in half quantity,
shower in full quality.



TECE

close to you

ADJUSTABLE CISTERNS

Dual-flush system with
efficient water-saving usage.



[Nikles Eco Brochure](#)



[TECE Cisterns Brochure](#)



MANIFOLD BOX

Manage real-time water consumption with
manifold regulation, where the water force at
each individual outlet can be manipulated easily.

[Giacomini Pipe-in-Pipe
system Brochure](#)

[Checkout
Instant water
heaters by
Eemaxx](#)

**NO WASTE
ON**

*These are absolute No-No's for
any bathroom or washroom,
premium or otherwise.*

*MTPL has covered every angle
when it comes to personal hygiene spaces,
sourcing cutting-edge tech from
around the world and offering you
doorstep delivery and installation.*

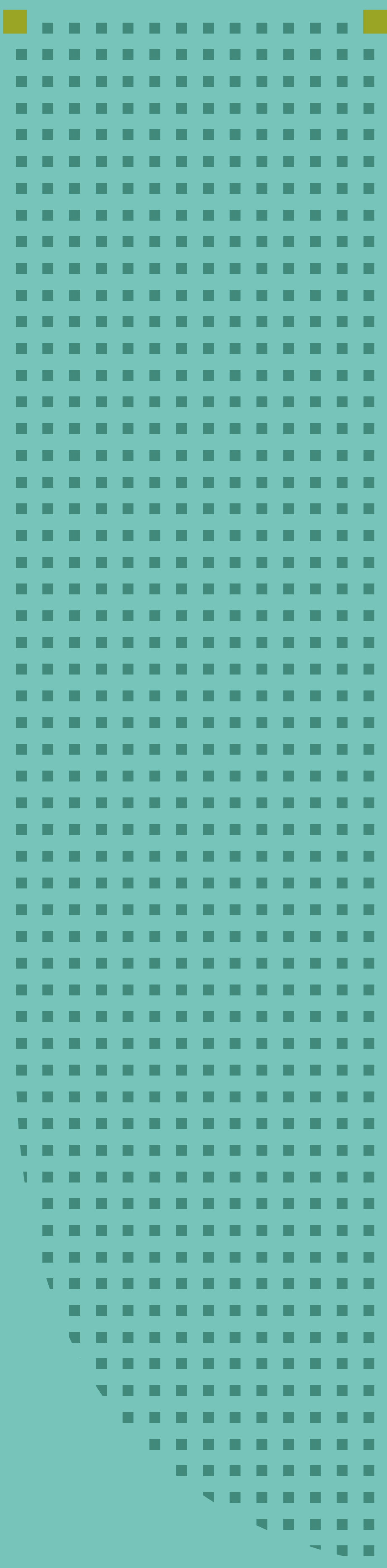
*So, if you suffer even one of the No's,
it's time to call us.*

YES?



Click or scan to
Connect on
WhatsApp

MODERNIZING TRENDS PVT. LTD.
www.watere-motion.com



**YOU
DO
YOU!**

**BATHROOM
AESTHETICS
TO SUIT
YOUR TASTE
AND STYLE.**

MODERN MINIMALIST



TECE
close to you



SHOWER CHANNELS

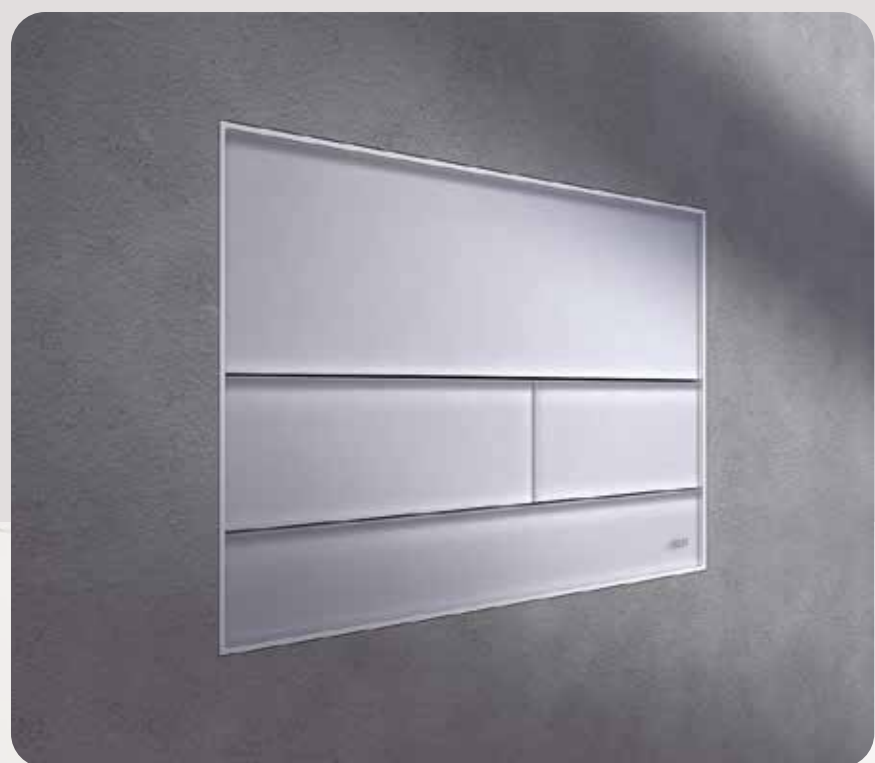
Drainage that blends style with brains. Tile, glass and stone finishes patented with the 3-slope design for zero water stagnation. Easy to clean and built to last.

[TECE Shower channel Brochure](#)

[TECE Lineo Brochure](#)

[Introducing TECE Drainway](#)

TECE
close to you



FLUSH PLATES

350+ flush plates in glass, metal and stainless steel finishes to match every vibe. Universal fit for all TECE cisterns, dual-flush tech to save water and soft-touch buttons for

[TECE Flush Plates Brochure](#)

TECE
close to you



CERAMICS

Clean designs and cleaner spaces with minimalist WCs and washbasins in germ and stain-resistant surfaces. Pairs effortlessly with TECE flush systems for a bathroom that's as functional as it is Instagram-worthy.

[TECE Ceramics Brochure](#)

[TECE One WC](#)

[TECE One Neo](#)



RUSTIC RETREAT

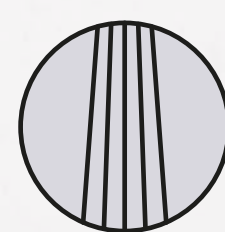



NIKLES **ECO**

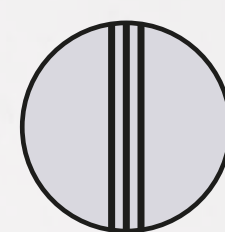


HAND SHOWERS

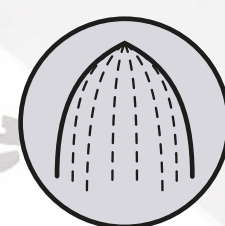
Efficiency and technology come together to bring the comfort of a full shower regardless of the pressure. Choose between Rain, Massage, Silk or Swirl sprays to help you refresh,



Rain



Massage



Silk



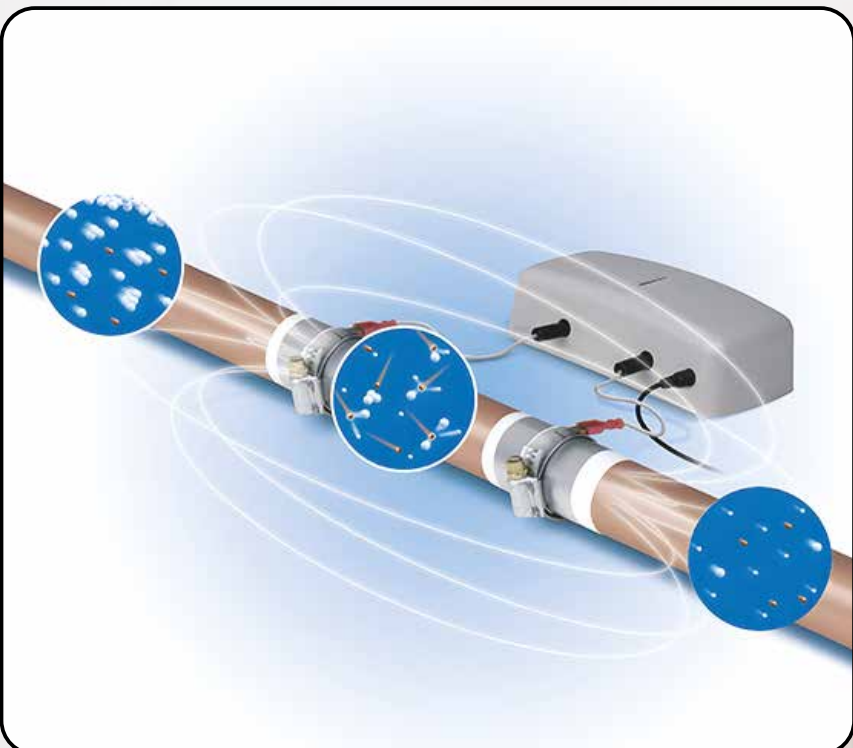
Swirl



SHOWERS

Luxury meets sustainability with air-infusion tech that offers a spa-like spray that saves 50% water. Anti-lime nozzles and Swiss precision ensure a clog-free and unparalleled

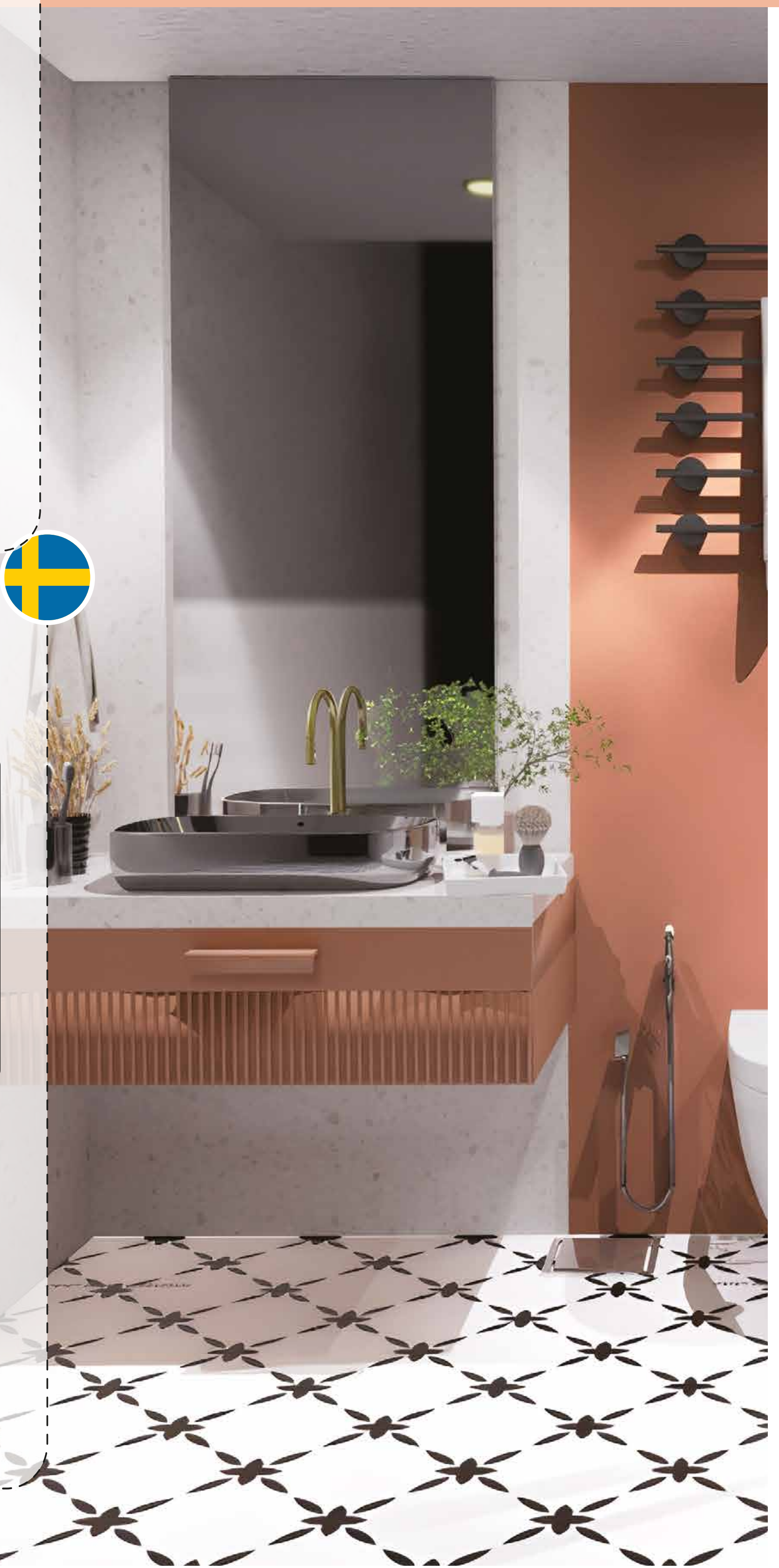
[Nikles Eco shower heads Brochures](#)



DECALCIFERS

The limescale buster that keeps pipes, taps and appliances scale-free for longer lifespans, delivering smoother water flow and little to virtually no maintenance.

[TREBEMA Decalcifier Brochure](#)



VINTAGE VIBE



inda[®]
bathroom interiors



BATH ACCESSORIES AND FURNITURE

Bathroom bling that's sleek, stylish and lavish. Accessories like racks, shelves, dispensers, and everything else you may need to complete your bathroom experience.

All are built to outlast rust and trends. Modern, minimal or classic luxe, you cannot go wrong.

[INDA Furniture Brochure](#)

[INDA Accessories Brochure](#)





cisal



SHOWERS

Italian design with everyday ease. Crisp lines, smooth flow and finishes that blend in beautifully. From overheads to handhelds, each piece is built for balance. Subtle, stylish and reliable, Cisal brings quiet luxury to your shower time.



cisal



FAUCETS

Smart water wizardry that nails the perfect temperature rain shower for the relaxing spa-like feel. Gold, matte black or brushed nickel, your bathroom, your rules.

[Cisal Bathroom Collection Brochure](#)

LAVISH LUXURY



bongio[®]
MADE IN ITALY SINCE 1936



FAUCETS

Taps that talk style - bold, refined and unmistakably Italian. With finishes that turn heads and form that steals the spotlight. Satin gold, matte black, or chrome, these are not just faucets, they're fashion for your basin.

[Bongio Collection Brochure](#)





bongio[®]
MADE IN ITALY SINCE 1936



SHOWERS

Showers with flair - sculpted, sleek and sure to impress. From ceiling panels to handhelds, make it rain, mist or stream, Bongio delivers performance in a designer's skin. Because your shower should look as good as it feels.

[Bongio Collection Brochure](#)

*Your taste and style is something
you want your living spaces to exude.
Your bathroom is no different...
in fact, in the five minutes that
your guest spends in there, it speaks about
the kind of person you are.*

DON'T HOLD BACK,

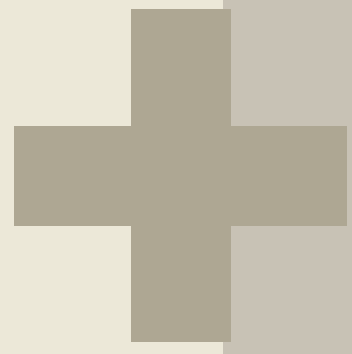
*Go ahead and paint the canvas
as only you can do.
MTPL will provide the palette,
textures and colors.*



Scan or click to
Connect on
WhatsApp

MODERNIZING TRENDS PVT. LTD.

www.watere-motion.com



**AND
THERE'S
MORE...**



**INNOVATIVE
ADDITIONS
FOR
EFFICIENT
LIVING.**

SPACES + INNOVATION



**ADVANCED FOOD WASTE DISPOSER
FOR MODERN KITCHENS.**

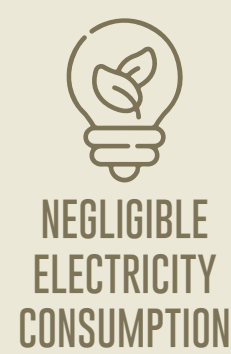




TURN KITCHEN WASTE INTO CONVENIENCE. OUR ADVANCED FOOD WASTE DISPOSER ENSURES A CLEANER, MODERN KITCHEN EXPERIENCE.



BENEFITS



INNOVATIVE COOLING SYSTEM FOR SUPERIOR COMFORT AND WELL-BEING.

CEILING



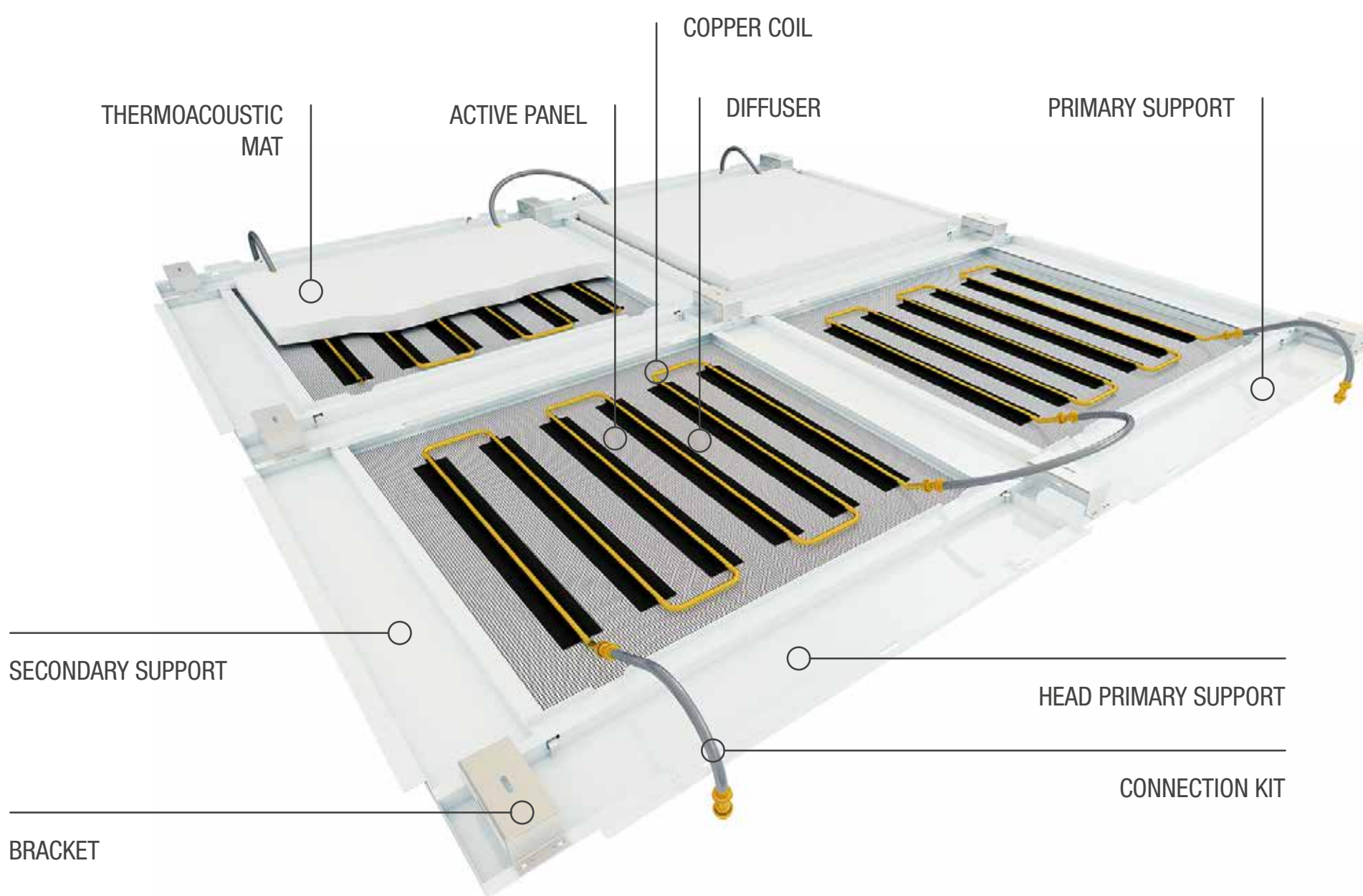
[Giacomini Radiant Ceiling Brochure](#)


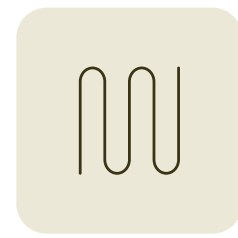
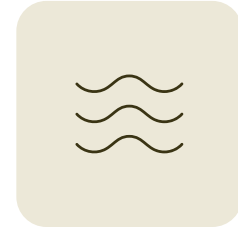

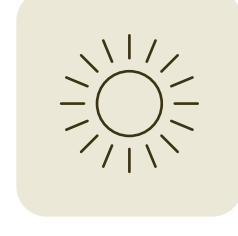
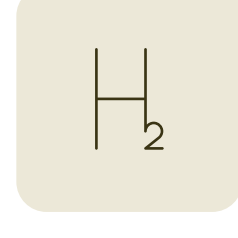

EXPERIENCE ENERGY-EFFICIENT CLIMATE CONTROL WITH OUR INNOVATIVE RADIANT COOLING SYSTEMS.

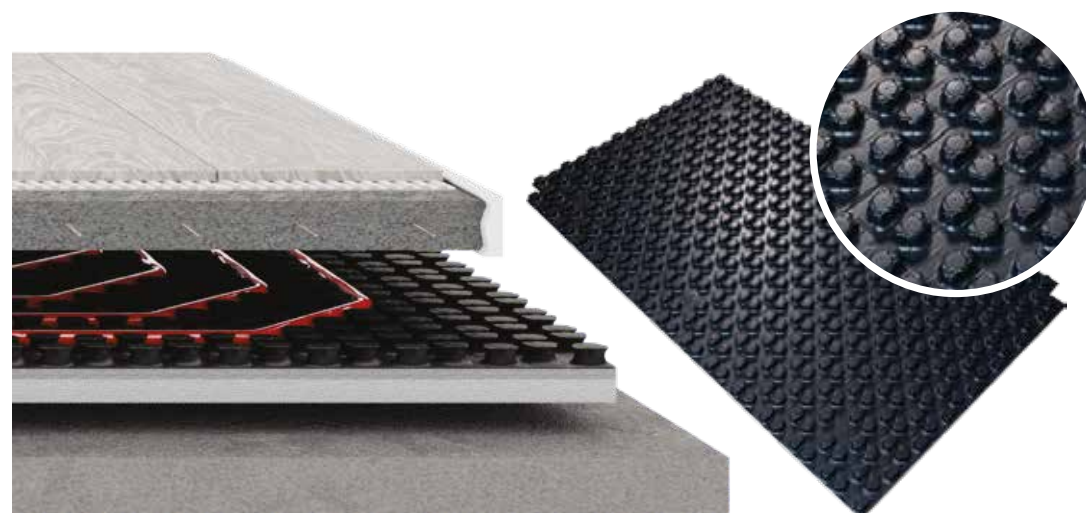
FLOOR



[Giacomini Radiant floor system brochure](#)



-  Energy Management
-  Radiant Systems
-  Water Management
-  Gas Distribution
-  Renewable Sources
-  Hydrogen Systems
-  Fire Protection



INTRODUCING



Klimacore Brochure

BREATHE EASY. FEEL COMFY. LIVE HEALTHY.

From humid Mumbai and arid Jaisalmer to frigid Ladakh, we craft ideal thermal and air quality enhancement solutions for Indoor spaces, prioritizing comfort and health.

BENEFITS:

- ✓ Expert, custom designs for optimal airflow, temperature and purity.
- ✓ Flexible team execution to handle complex installs.
- ✓ Proven pan-India solutions across diverse geographies and climates.
- ✓ Health-first approach towards the inhabitant's well-being.

F A C T

Breathe *life* into *living* spaces.

F.A.C.T. = Fresh Air Circulation Technology

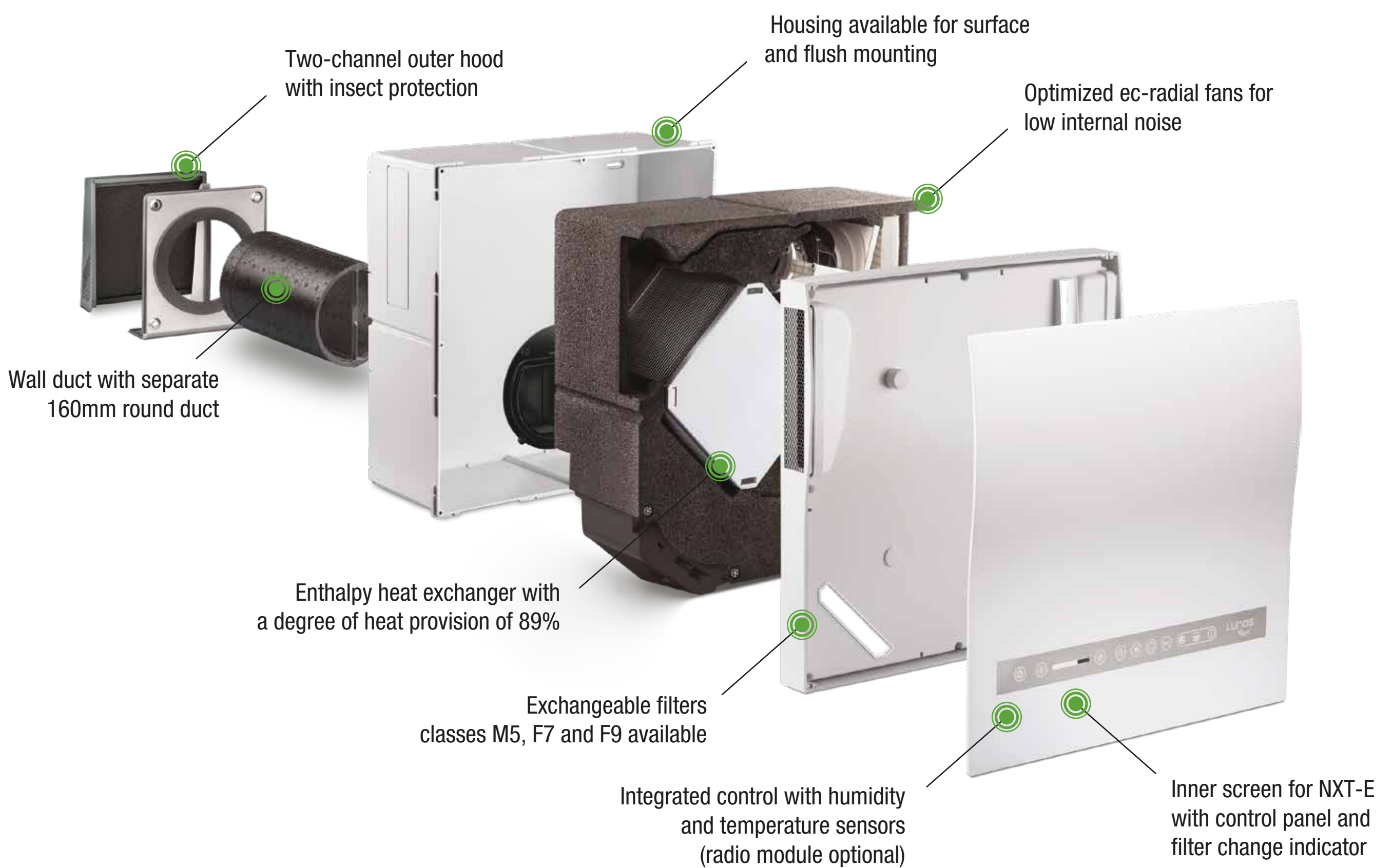


**ENSURES
HEALTHY
INDOOR AIR
CIRCULATION.**

Made in Germany



**BREATHE EASY WITH SMART AIR CIRCULATION TECHNOLOGY.
KEEPS YOUR INDOOR AIR HEALTHY AND FRESH.**



WHAT PROBLEMS DOES IT SOLVE?



01 AIR POLLUTION



02 CONSTRUCTION DUST

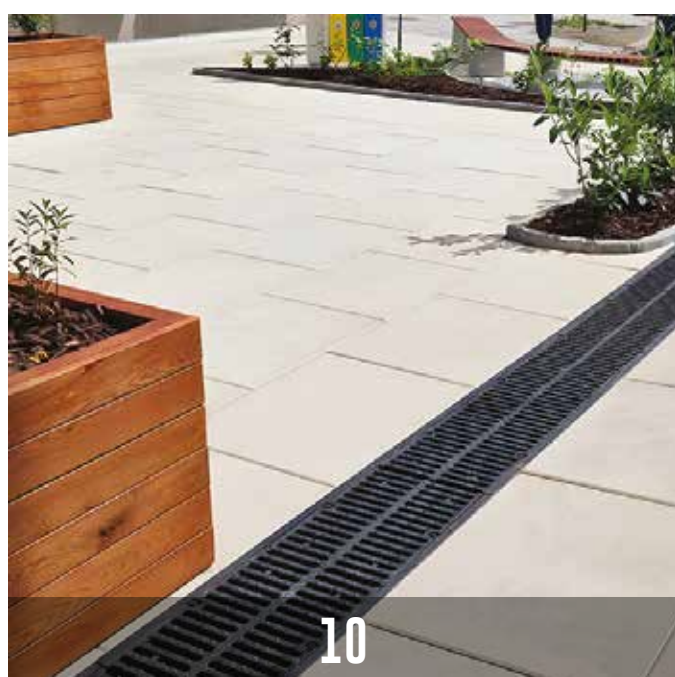
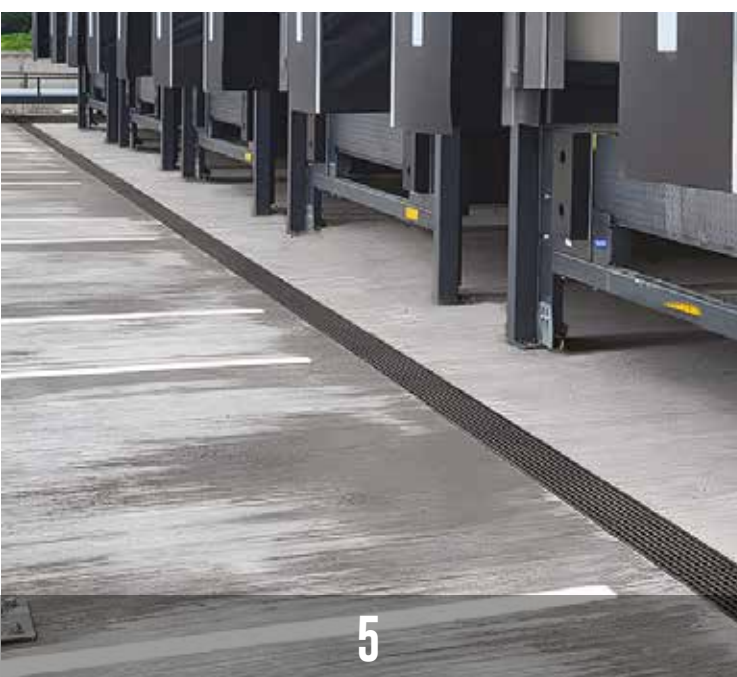
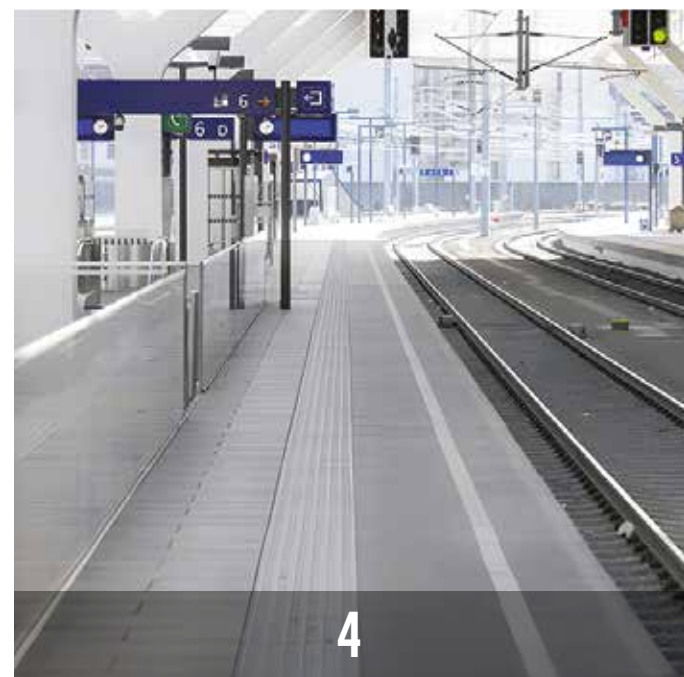
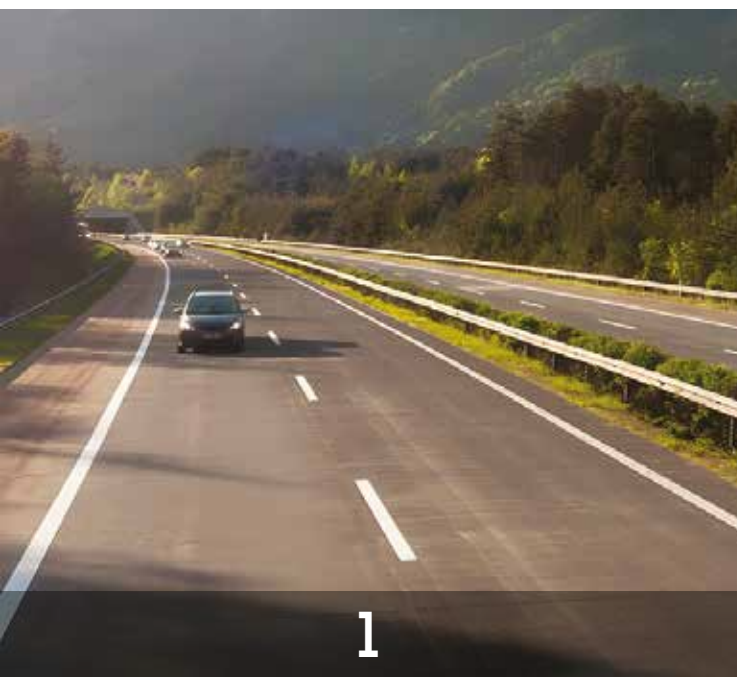


03 POOR ROOM VENTILATION

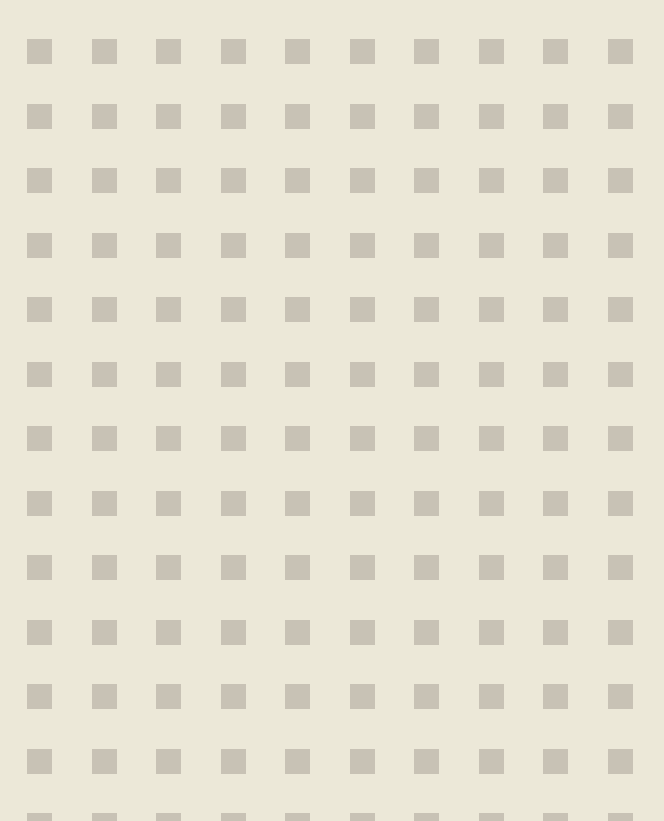
Lunos FACT Brochure



**PROTECT YOUR OUTDOOR SPACES
WITH OUR EFFECTIVE AND SUSTAINABLE
STORMWATER MANAGEMENT SOLUTIONS.**

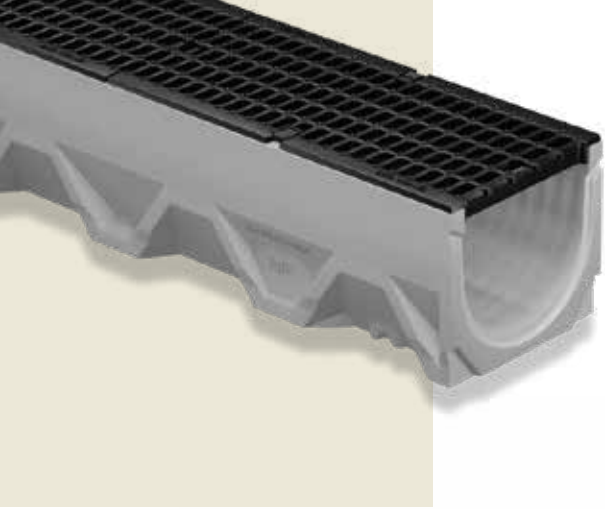


- 1. Highway Drainage
- 2. Road Drainage
- 3. Car Park Drainage
- 4. Railway Drainage
- 5. Drainage Systems for Logistics Centers and Industrial Premises
- 6. Drainage for Homes, Gardens and Landscapes
- 7. Drainage for Sports Fields and Swimming Pools
- 8. Terrace Drainage
- 9. Facade Drainage
- 10. Drainage of Paved Surfaces
- 11. Airport Drainage
- 12. Drainage for Race Tracks and Test Tracks

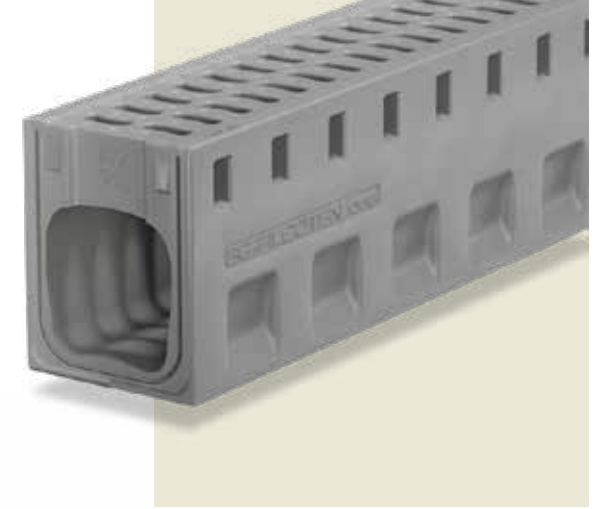


AS PARTICULAR AS YOUR REQUIREMENTS!

FILCOTEN - LIGHT



FILCOTEN - ONE



FILCOTEN - PRO



FILCOTEN - TEC



Minimal weight



Perfect hold in the concrete bed



High drainage performance



Resistant to extreme temperatures and UV light



Fireproof



High Performance Concrete



Verified life cycle assessment (LCA)



Resource efficiency



Sustainable production



Clean energy for clean products

Filcoten Brochure

We know that some challenges cannot be solved with standard channel elements. Therefore, our technicians plan and develop special or individual solutions for you. With our know-how, we produce what you require and support with our advice at your construction site.


MADE IN ITALY

PRECISE CENTRAL CLIMATE SOLUTIONS FOR EVERY SPACE.



Chiller

From innovative chilled water fan coil units (FCUs), efficient heat pumps and high-efficiency chillers to centralized HRV systems, Aermec delivers advanced air conditioning solutions tailored to any indoor environment. Trusted globally, the technology ensures optimal comfort for residences, offices, hotels, hospitals, heritage sites and beyond. Crafted in Italy and curated for the Indian residential and commercial spaces.

AERMEC



Chilled water FCU for ceiling



[know more about Aermec](#)

THE SMARTER, SAFER, FASTER ALTERNATIVE TO COPPER PIPING.

FastPipe® - The modern choice for HVAC efficiency - is a flexible, multi-layer composite solution designed for effortless installation and unmatched durability. Faster to deploy, safer to use, anti-theft and built to withstand extreme conditions - the perfect choice to redefine HVAC piping in India.


Tecnologie Innovative Italia

2

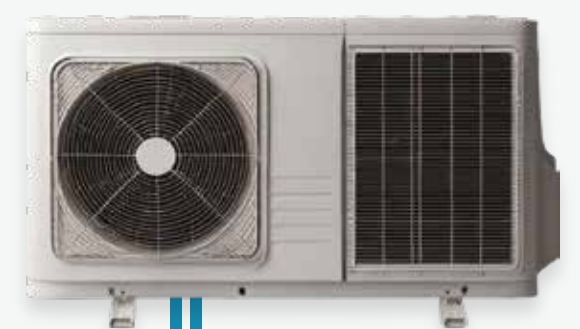


Replacing Copper: The Future of AC Piping

A split AC system consists of an outdoor unit (1) housing the compressor and fan, and one or more indoor units (2) delivering conditioned air. These are typically connected by a pipeline network (3) - traditionally using copper pipes.

Now, there's a better way - FastPipe®

1



3



fastpipe®

[Fastpipe Brochure](#)

***Raise your standard of living and working with
MTPL's innovative, efficient and technically
sound offerings.***

***It's not just about bathrooms,
there's a lot more we have to offer
within your office, commercial and living space.***

***From your kitchen, pantries,
washrooms, conference rooms,
to even outdoor stormwater management
for residential and commercial societies...
MTPL offers the best tech from around the world.***



**Modernizing
t r e n d s**



Scan or click to
Connect on
WhatsApp

MODERNIZING TRENDS PVT. LTD.

www.watere-motion.com



3 GENERATIONS
3+ DECADES
3K+ PRODUCTS

**FROM VISION
TO VALUE.**

THIS IS US

LEGACY

Humble Beginnings...

Our story unfolds from the dream of our visionary founder, Shri Pramod Mehta. Over four decades ago, he and his brothers began a modest plumbing retail establishment in the heart of Mumbai's Nagdevi downtown market.

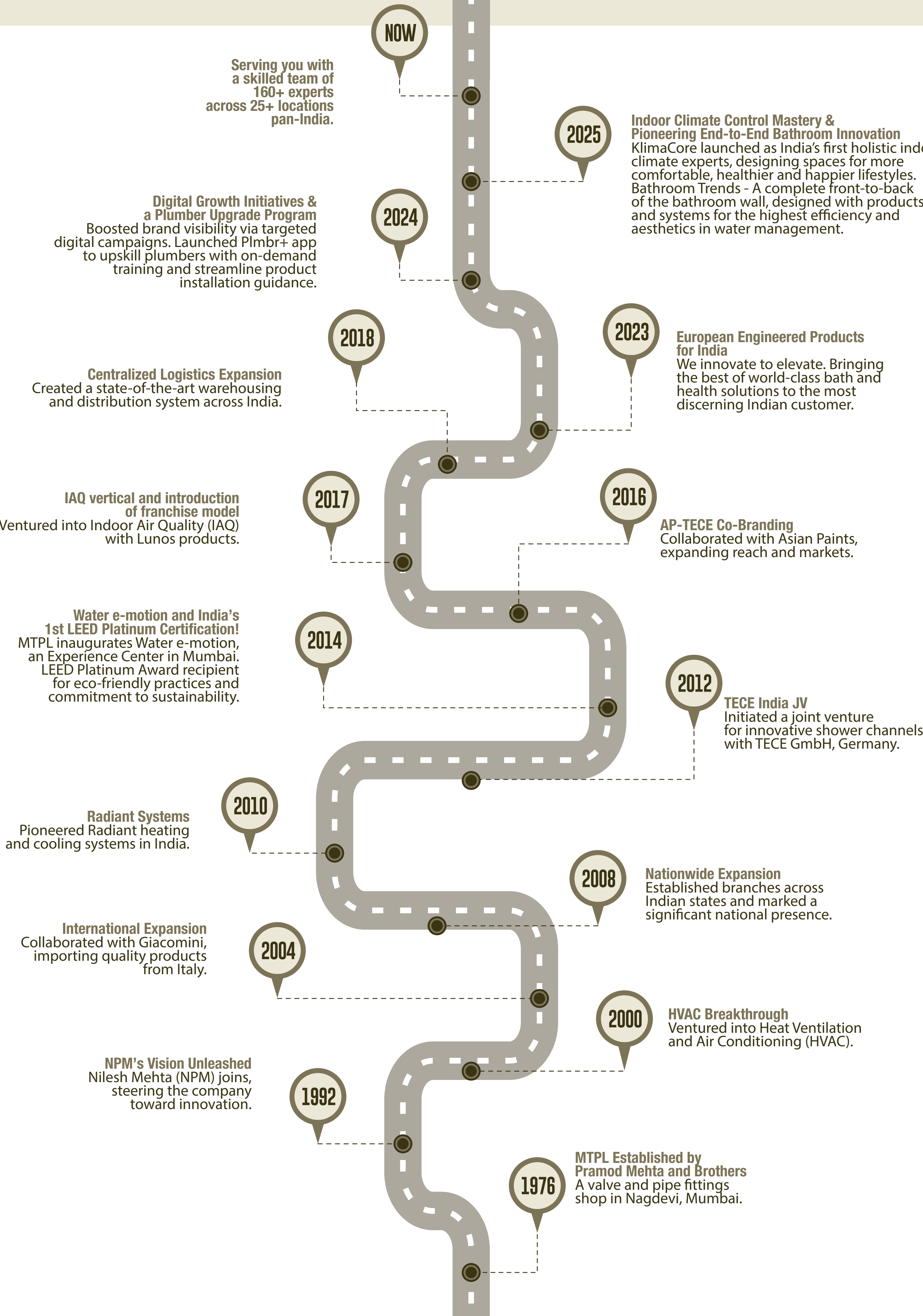


Continuing the Legacy...

Our journey is defined by a team of passionate professionals led by the Next-Gen sons: Nilesh Mehta, Samir Mehta and Rupesh Mehta. Together, they have taken the company to newer heights of success, while creating impactful home and office improvement solutions.

Now, with the third generation driving digital initiatives, the company is all set to move with the times and fresh offerings.

OUR JOURNEY



PARTNERSHIPS



*Strategic partnerships
with international brands.*



TECE
close to you

LUNOS
energy-efficient



in **sink**erator®



 **ECO**



TREBEMA



 **FILCOTEN**®



 **GIACOMINI**
WATER E-MOTION

AERMEC

fastpipe®

cisal

 **inda**
bathroom interiors

bongio
MADE IN ITALY SINCE 1936

 **RMO**
RACCORDERIE METALLICHE

OFFERINGS



High-Quality Products and Service

Meaningful product, service and infrastructure innovation. Crafted with exquisite materials, our products embody timeless elegance that lasts.



Extraordinary Service

Exceptional service that sets new standards of excellence and leaves a lasting impression. Customer is king. Our core focus is on exceeding expectations... always.



Sustainable Solutions

Portfolio that includes eco-friendly options aligning with sustainable practices focused on conserving energy and protecting natural resources that contribute to a greener future. We have been awarded the 1st LEED Platinum Certificate in India! It is an ultimate gratification, and testimony to our eternal commitment towards sustainability and environmental responsibility.

Cutting-Edge Technology

Experience latest technological advancements integrated into our products, elevating functionality, aesthetics and convenience in all of our verticals.



Water Management

Manage water and waste from the time it comes in, to when it goes out and beyond! From behind the scenes to overall aesthetics, we seamlessly integrate technology, efficiency and good looks.



HVAC Solutions

Enjoy precise climate control, energy-efficiency and perfect air quality that ensures a breath of freshness for you and your loved ones. Our state-of-the-art HVAC solutions are the new era of climate management.



Fire Protection

Equip yourself against any type of fire hazard with our innovative fire protection systems. We offer fire fighting systems, flow control valves and bellows of the top-most brands to help provide 360° fire protection.

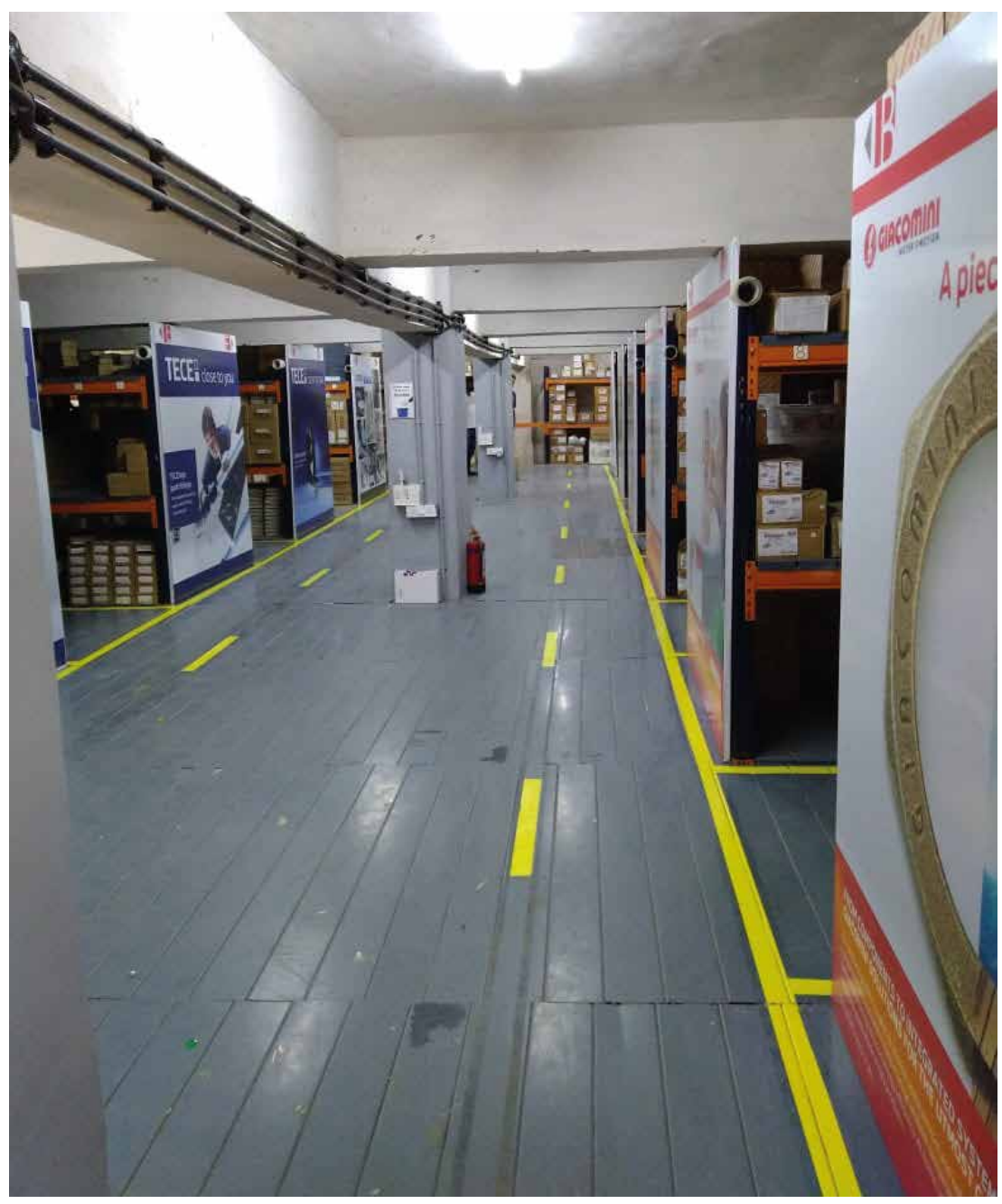
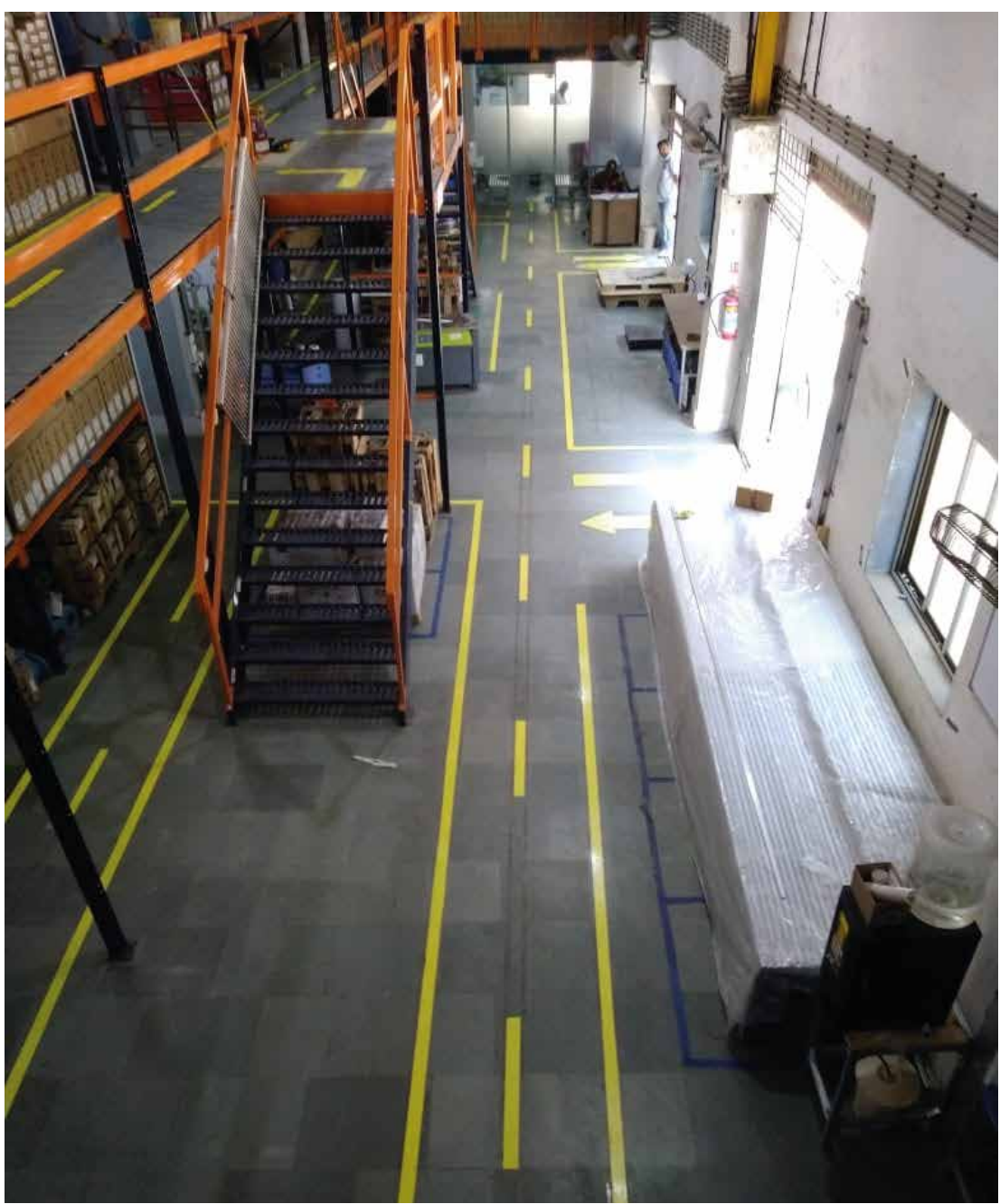
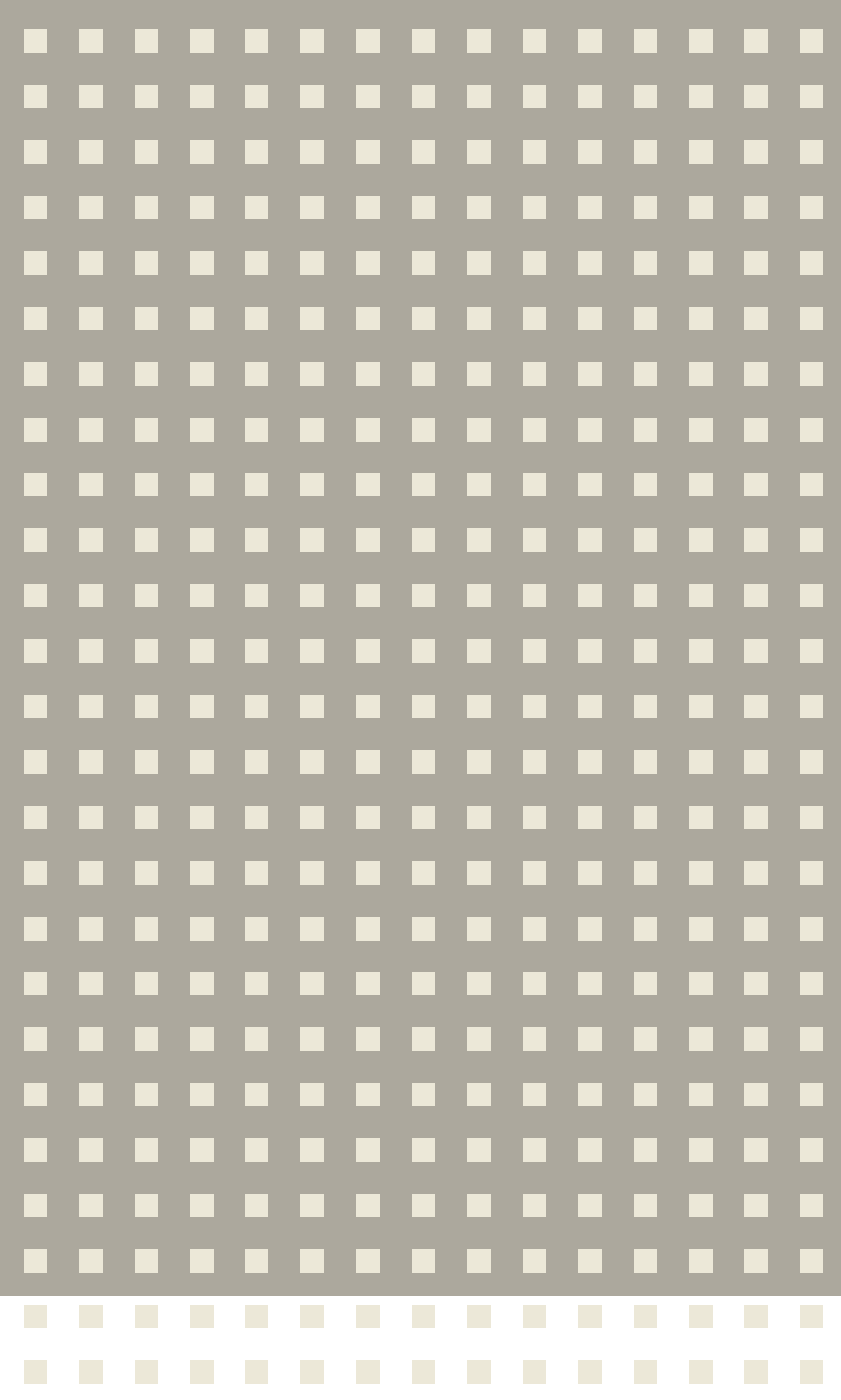


Radiant Systems

Discover the art of perfect temperature distribution with our Radiant heating and cooling solutions. Wrap yourself in a cozy embrace with utmost energy efficiency, silence and a sophisticated touch.

WAREHOUSE

*A state-of-the-art,
spacious facility with
a comprehensive
warehouse management
system,*



EXPERIENCE CENTER

Water[®]
e-motion



*Water e-motion in Mumbai, Pune,
Ahmedabad, Kolkata, Bhubaneshwar
and more...*

These Experience Centers offer:

- Cutting-edge products*
- Innovative solutions*
- Interactive training facilities*

Plmbr⁺ TM

We have created from scratch, an App and a strong plumber community, supporting installations and repairs. Our products, sales, service, expertise and training being made available to them... bringing an organized approach to a once unorganized sector.

CUSTOMERS

Premium bathrooms have been executed for Ultra-High-Net-Worth Individuals (UHNWIs) across the country.

We believe in building bonds, creating strong, long-lasting relationships with every entity and person we connect with. To this end, we offer our customers:

Personalized Solutions

Customization of systems and partnerships are key. We are flexible, nimble and proactive in the marketplace.

Expert Consultation

An experienced, passionate team expertly advising and guiding each step.

Innovative Designs

Connect:
Products, services and the distribution network to enhance customer latent demand.

Improve:
Technology, systems and processes for optimization and efficiency.

Emphasize:
Ease of accessibility, environmental

Our philosophy,
to create spaces where aesthetics meet

innovation and functionality complements design,

guides us in our quest to bring you
cutting-edge, technologically advanced,
innovative products.

Products that will make your living and
working space more comfortable,
easy to maintain and as user-friendly
as it possibly can.

It's a promise of TRUST from
our MTPL family to yours.



Scan or click to
Connect on
WhatsApp

MODERNIZING TRENDS PVT. LTD.

www.modernizingtrends.com